

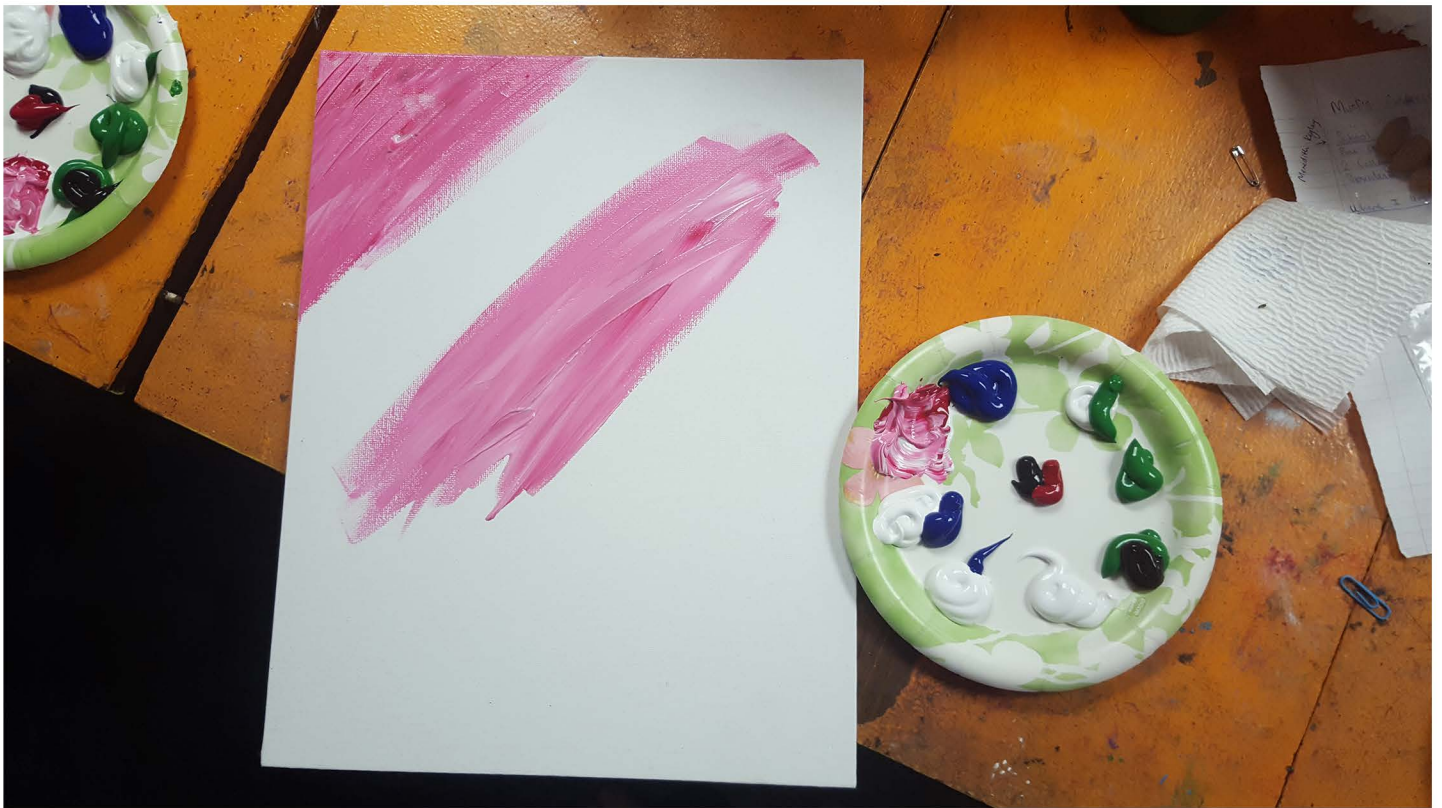


Set up:

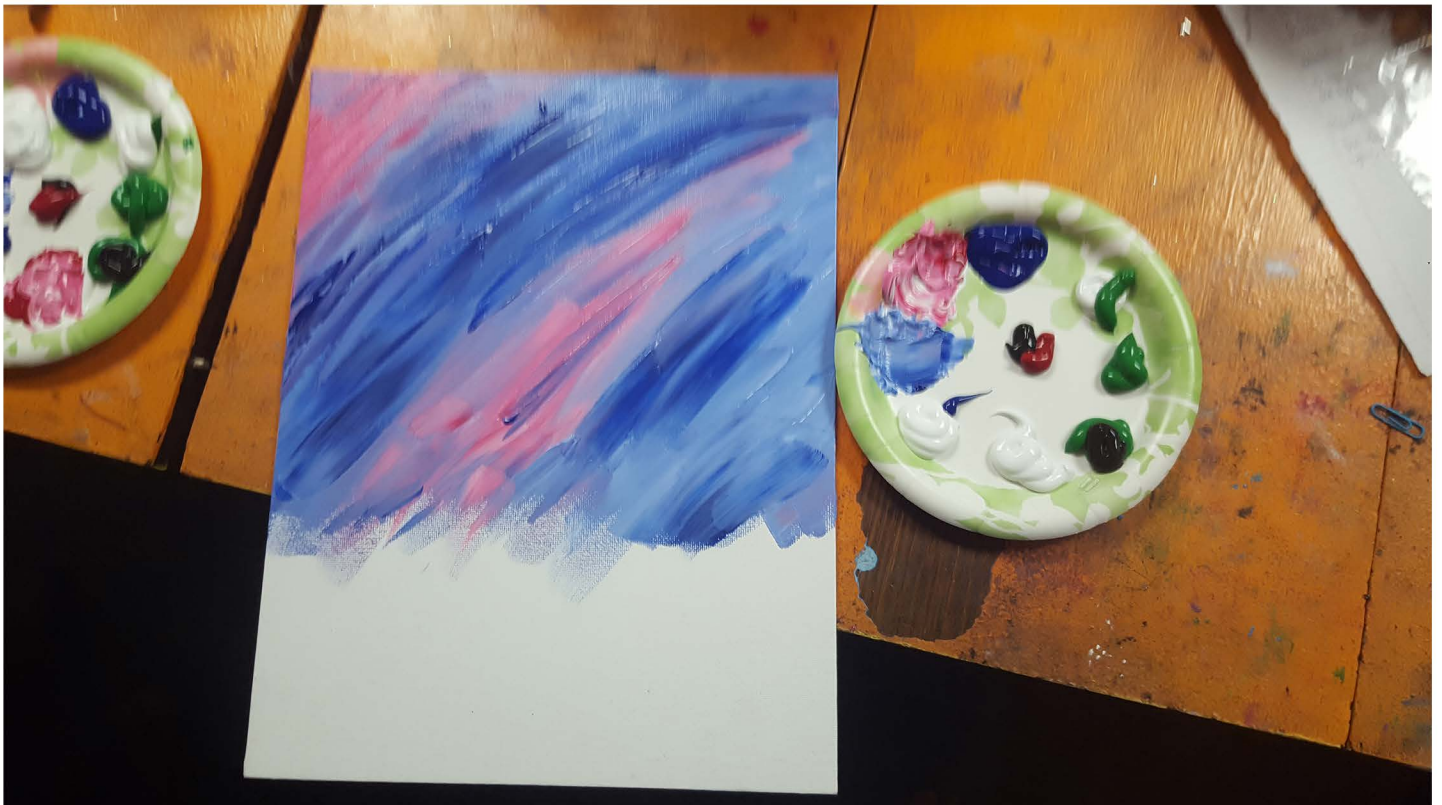
1" flat brush, 1/2" flat brush, round brush

No stencils

No special colors



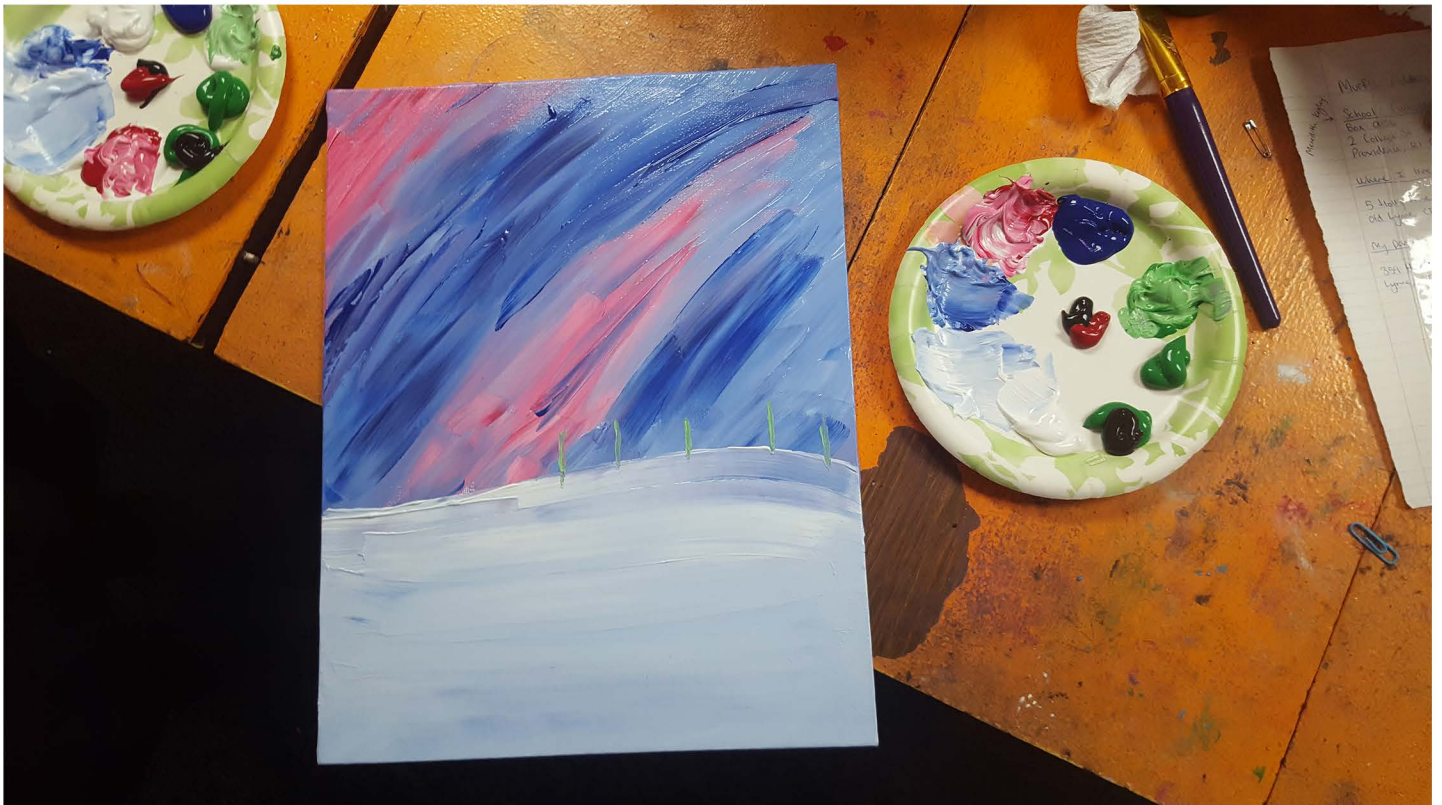
Use your 1" brush to messy-mix the 1:2 red/white blob. Don't overwork it--let it be streaky! Top 2/3 canvas.



Don't clean your brush yet--do the same for the 1:2 white-blue blob, working it in the red to change the red to primarily purple tones. Long live streaky texture! Finally, add the dark blue blob. Don't over work.



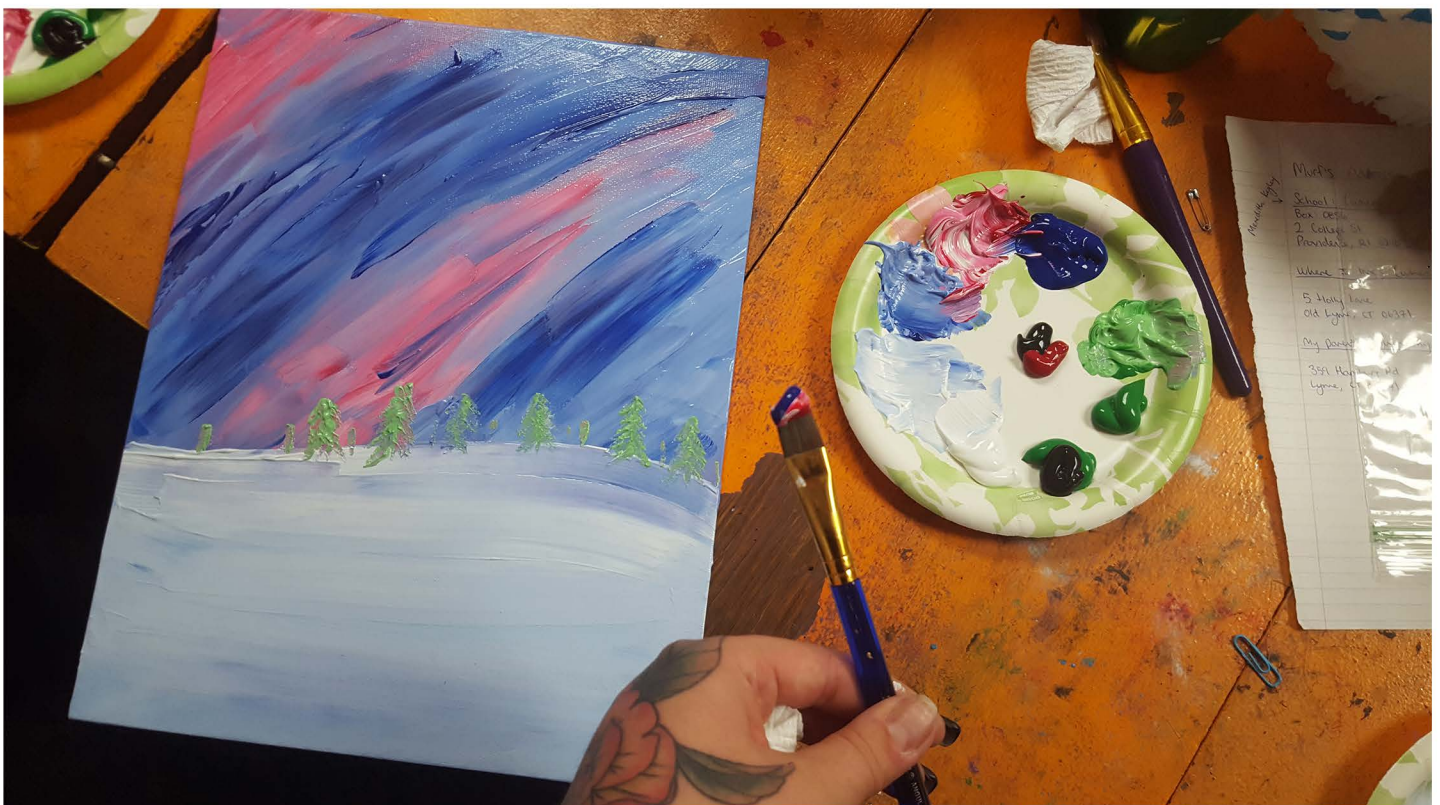
Wipe off the brush without rinsing. Mix the blue-white blob with barely any blue smoothly, and make a smooth ground with a small hill.



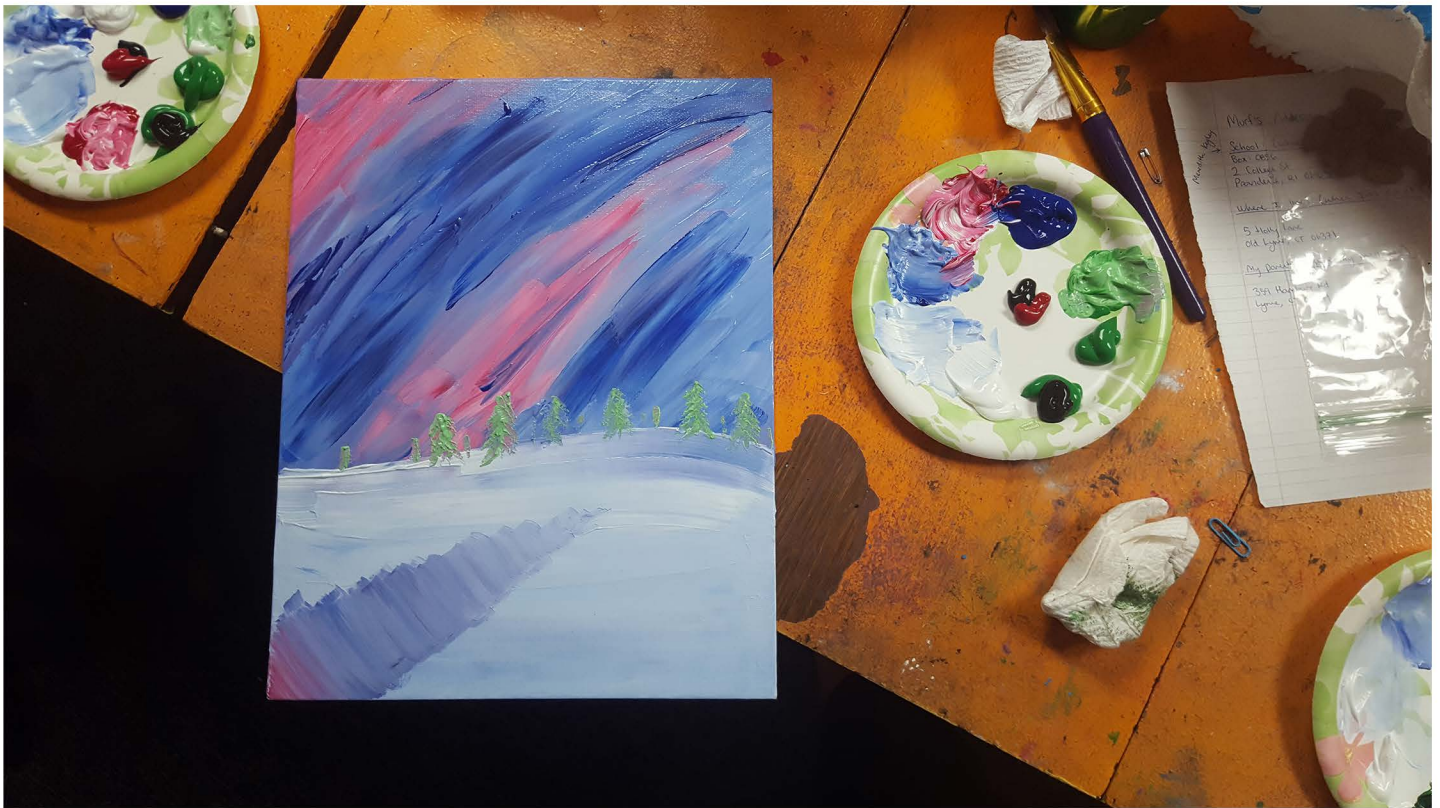
Rinse off your 1" brush entirely and clean thoroughly. Get your 1/2" brush and, mix the green/white blob, and pull extra paint off brush on your plate so you have a straight line. Add a few straight lines for "background trees" bark, about 1" long each. Make sure they start at the horizon line.



Add tiny other lines of the same color at a 45° angle away from the bark. (Seen in next photo, you can add other tiny lines in the background at the horizon line for VERY far away little trees without details.)



(Seen here: very far away trees step.) Now we're going to do the shadow: pick up the leftover blue/red blobs from the sky, but they don't have to be mixed well.



Start in the corner and go back-and-forth in the wet paint, pointing your triangle of a shadow towards the hill horizon line. You can add paint 1 more time on your brush if you want but you must ALWAYS start from the canvas corner and work your way out so the triangle shadow fades.

AFTER THIS STEP, 20MIN BREAK FOR PAINT TO DRY



After your 20min break, paint more tree lines for the bark (step 1) then add more pines (step 2) in the regular green blob color, mimicking other trees in style. These trees should be larger: start lower, end higher!"



With your green still on your 1/2" brush (don't even wipe it) mix the red black. Do a series of straight lines from the top, starting lower and lower down the trunk of the tree so it gets thicker and thicker

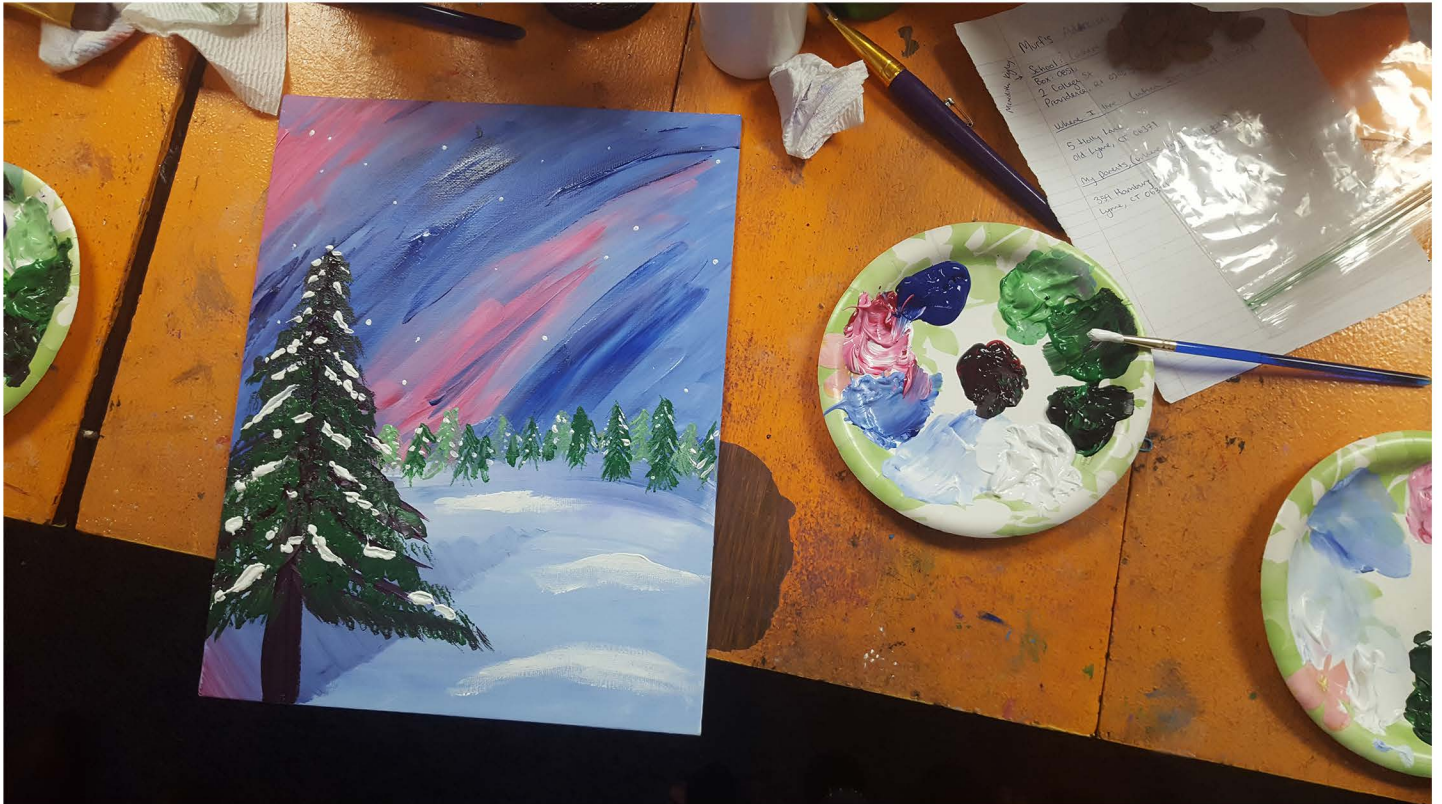


Add branches at a 45* angle, same color: small on top, large at bottom. They get less of an angle as they go down so they become flatter. Don't go all the way to the bottom.



Wipe off the brush but don't clean out. Using a tiny bit of the black/green and mixing it into the all-green, make pines using the flat edge of your 1/2" brush for texture. Just little cutting motions!

20MIN DRY BREAK AFTER THIS!



(1) With your round brush, show them how to twirl the brush to gather the bristles and add tiny dots of snow on the background trees and in the sky for stars.

(2) Load your brush, do one thin-thick-thin line for a background snow mound. Reload brush, do this for a middle-ground one. Reload brush, do this for a third close-to-the-viewer one. Then **WITHOUT ADDING MORE PAINT, use your dry brush to blend these lines with the surrounding snow.**

(3) Using a **VERY loaded brush of white, add tiny bits of white (dots or squiggle lines) to any remaining gaps on your tree where the background is showing. Background paint shouldn't get pulled up--you want the paint brush to have tons of paint on it! This part is very easy to add too much white to, so encourage guestss to take it easy.**