



This painting is generally simple but has a lot of annoying little details so pay attention to the text so it makes sense

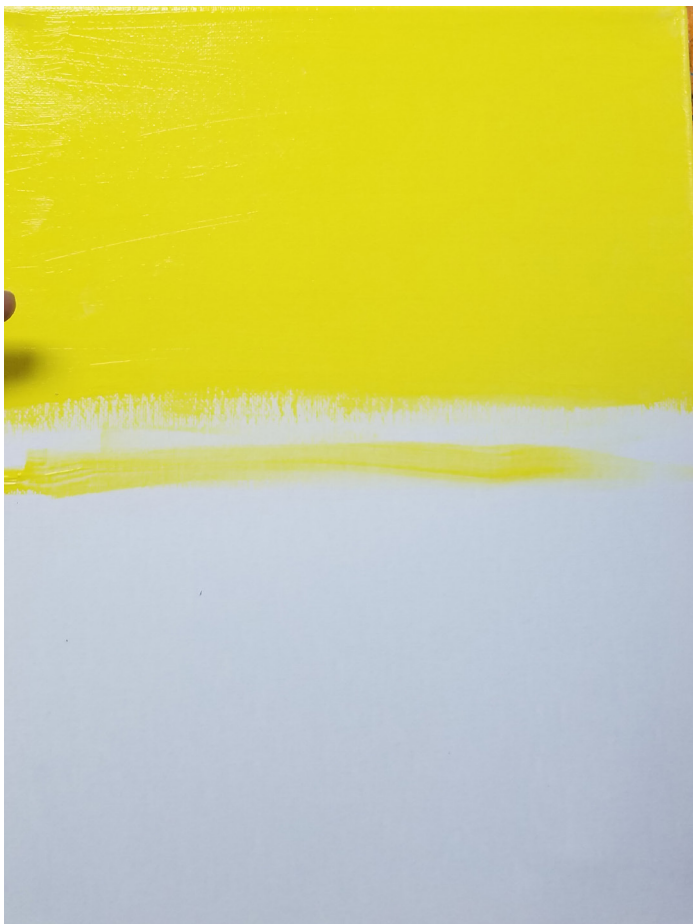


PALETTE

Easy, all about the same size blob

BRUSHES

Tiny round
1/2" flat



BIG YELLOW FIELD show them how to use the flat end of the brush so they're not trying to paint with the side of the brush.



BIG BLUE FIELD same.

Make sure there's NO holiday in between the plains or they're going to hate themselves at the end.



Add this big rocky shape in the corner. Black works great.



*** At this point Christine switched between two paintings but whatever roll with it.

First, using the 1" flat the thin way (the opposite of how they just used it) use the tiniest tiniest tiniest tiniest bit of red and add some streaks towards the top of the yellow. Then do the same with white.

Second, show them how to use the round to stamp some white fluffy bois. It's okay if some white or orange gets picked up with them because that's normal.

Then, while the white is still wet, stamp in some grey only on the bottom.

Then at the end, the TINIEST bit of black. You're basically mixing the black into the grey here so ideally the grey is still wet and the black is NOT an outline but a deep shadow.



DETAILS

LEFT

How you added those strokes in the sky, do the same with red (turning it purple) in the ocean

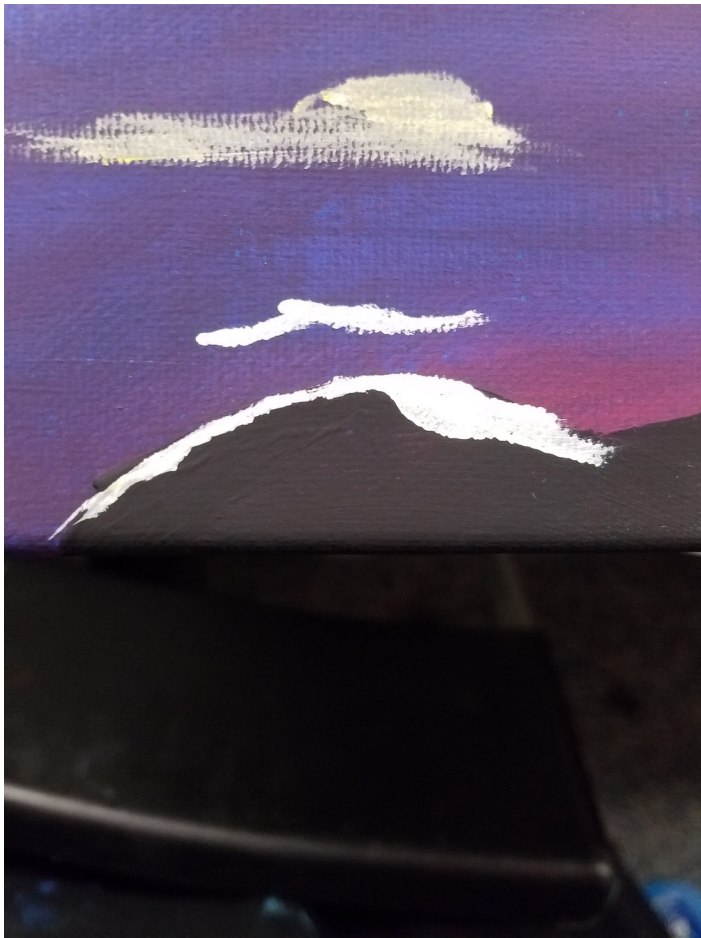
BOTTOM LEFT

Add a pure white sun somewhere like 50% up or even closer to the shore (but not higher than 50% in the white plain)

BOTTOM RIGHT

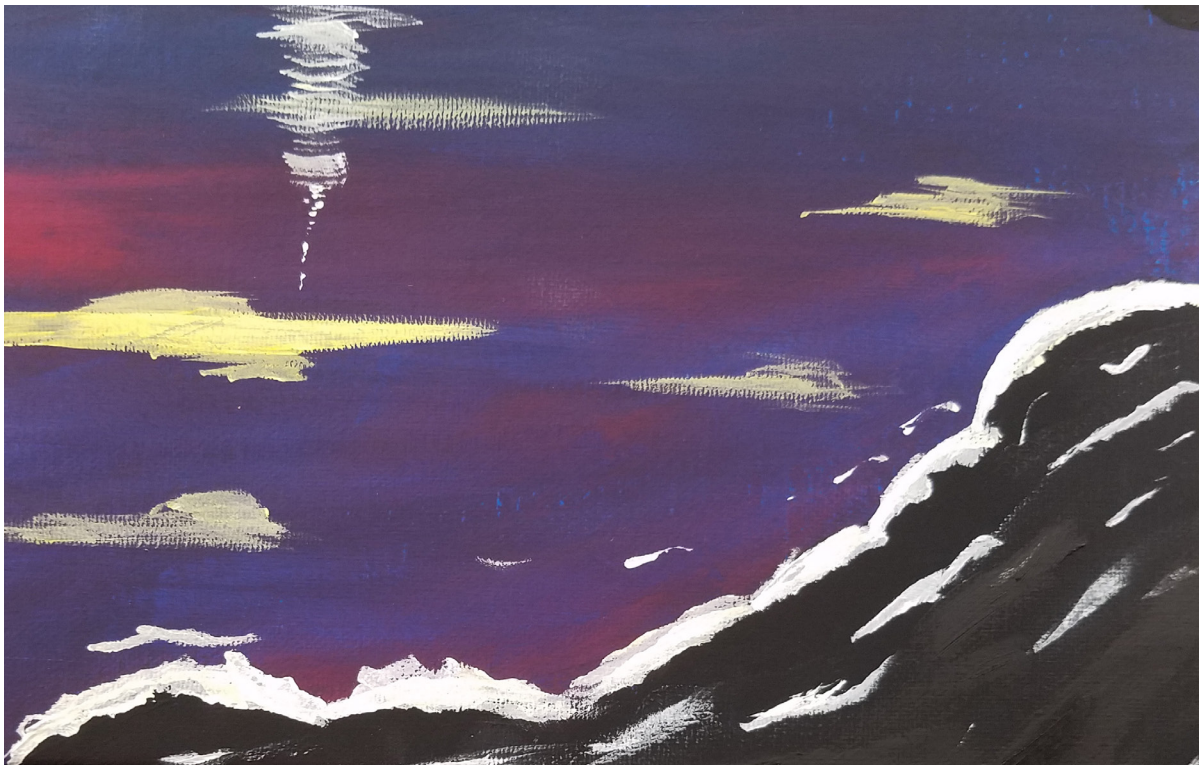
Add some white and yellow highlights in the water, using the round, trailing off below the sun. They're trailing off into invisibility but basically will form an upside down thin triangle.





ADD HIGHLIGHTS TO THE ROCK with white and grey.

These look like they're from a different painting because we were working on 2 at once but just roll with it. They show the same thing.





LEFT: Add two posts on each side of the painting so 50% are on each side of the horizon. Roughly the size of a pinky.

BOTTOM:

Start with two grey arches, then frame the bottom one with black lines, then frame the top one with a top black line.

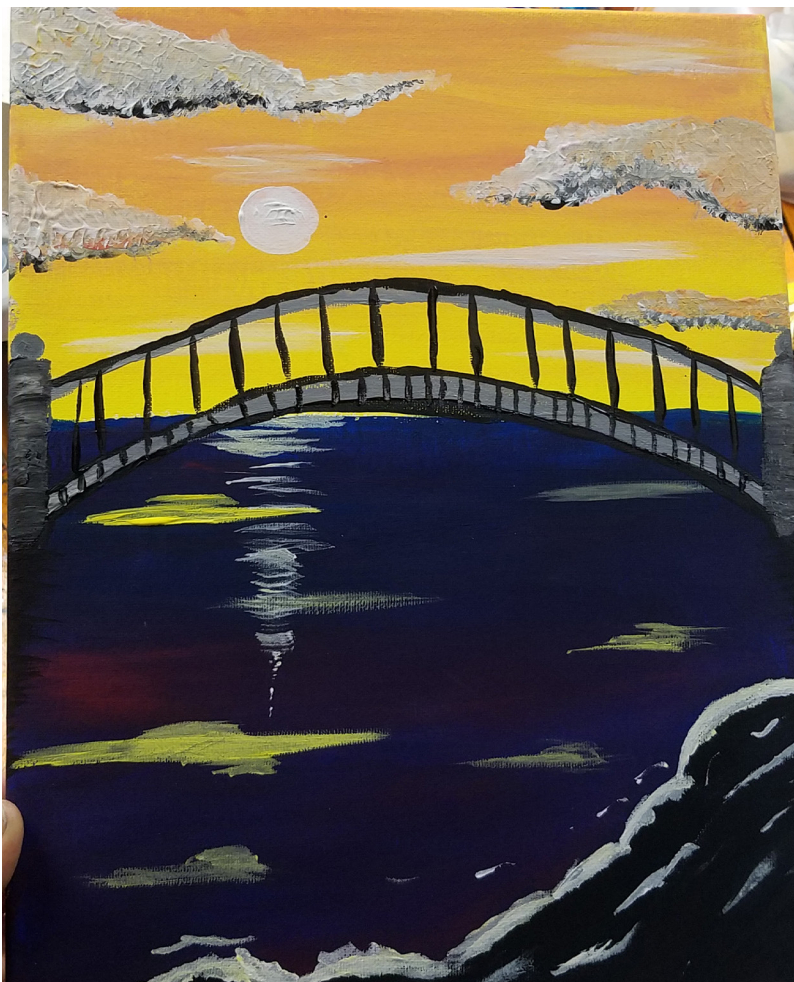
You can use the round for this or the 1/2" as a stamp, depending on the person. Either way you want VERY little paint on it and to paint very lightly. Remind everyone that this is the hardest part of the painting.





Add texture to the posts by first going in and adding some black to the side that's *AWAY* from the sun in a bunch of tiny left-right motions. Remember this is about texture so they should not over blenc.

Then do the same thing by adding white to the side nearest the sun.



That's it! You're done.