



This painting is easy looking but actually harder than most paintings we do here so make a v specific palette to help these kids out

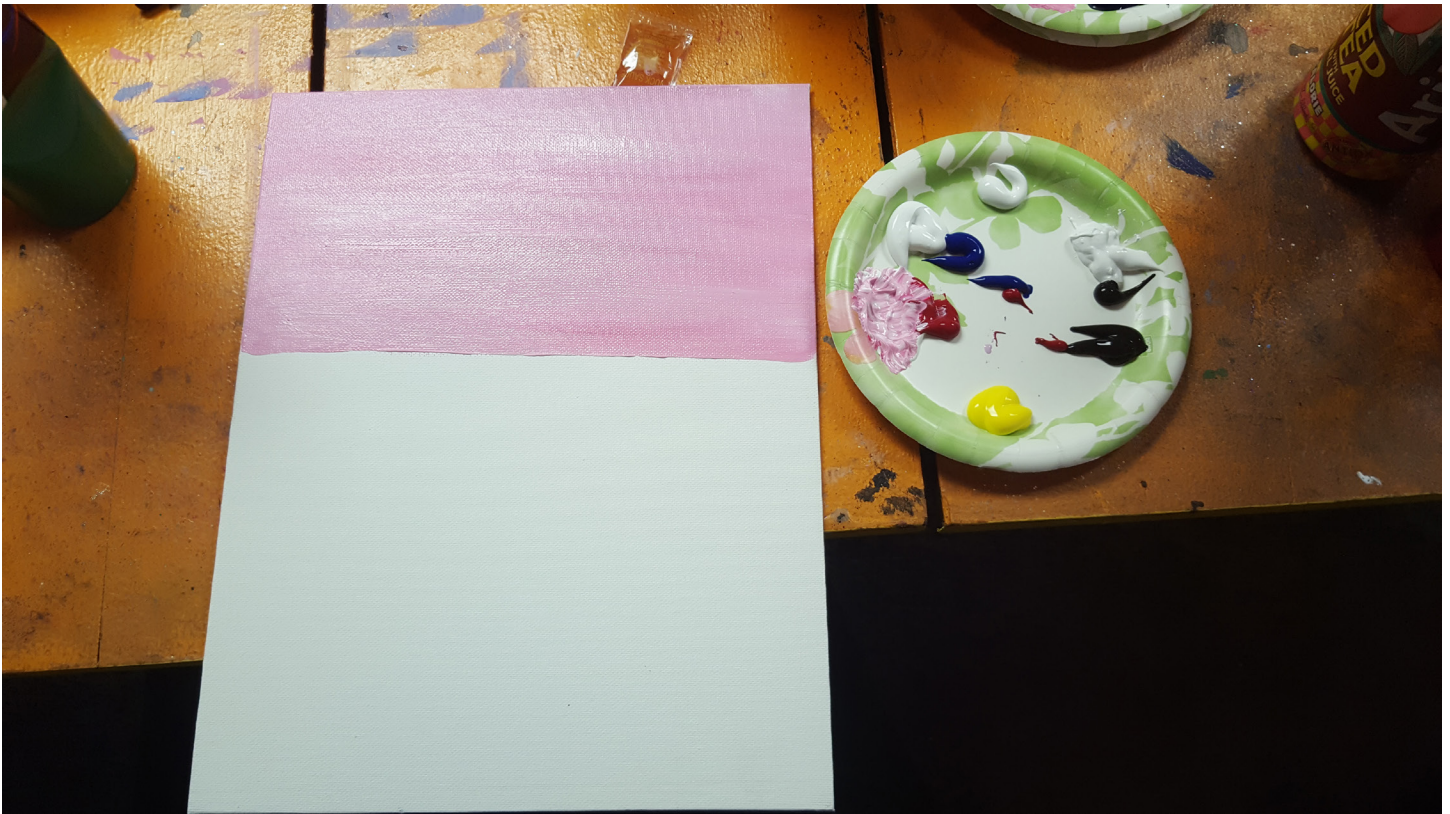


ANNOYING PALETTE

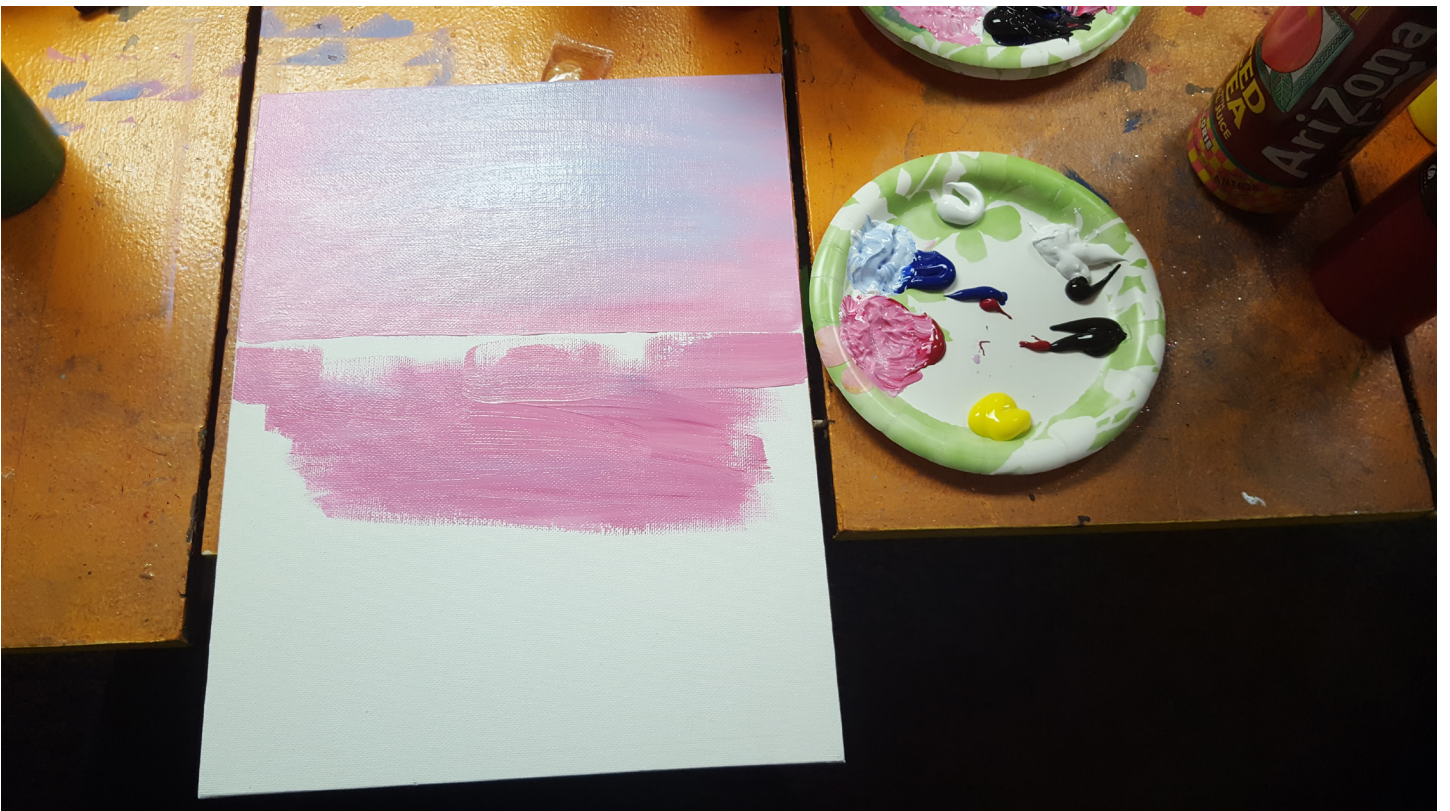
- Big white, lil red
- Big white, lil blue
- Lil white
- Big white, lil black
- Black
- Yellow

BRUSHES

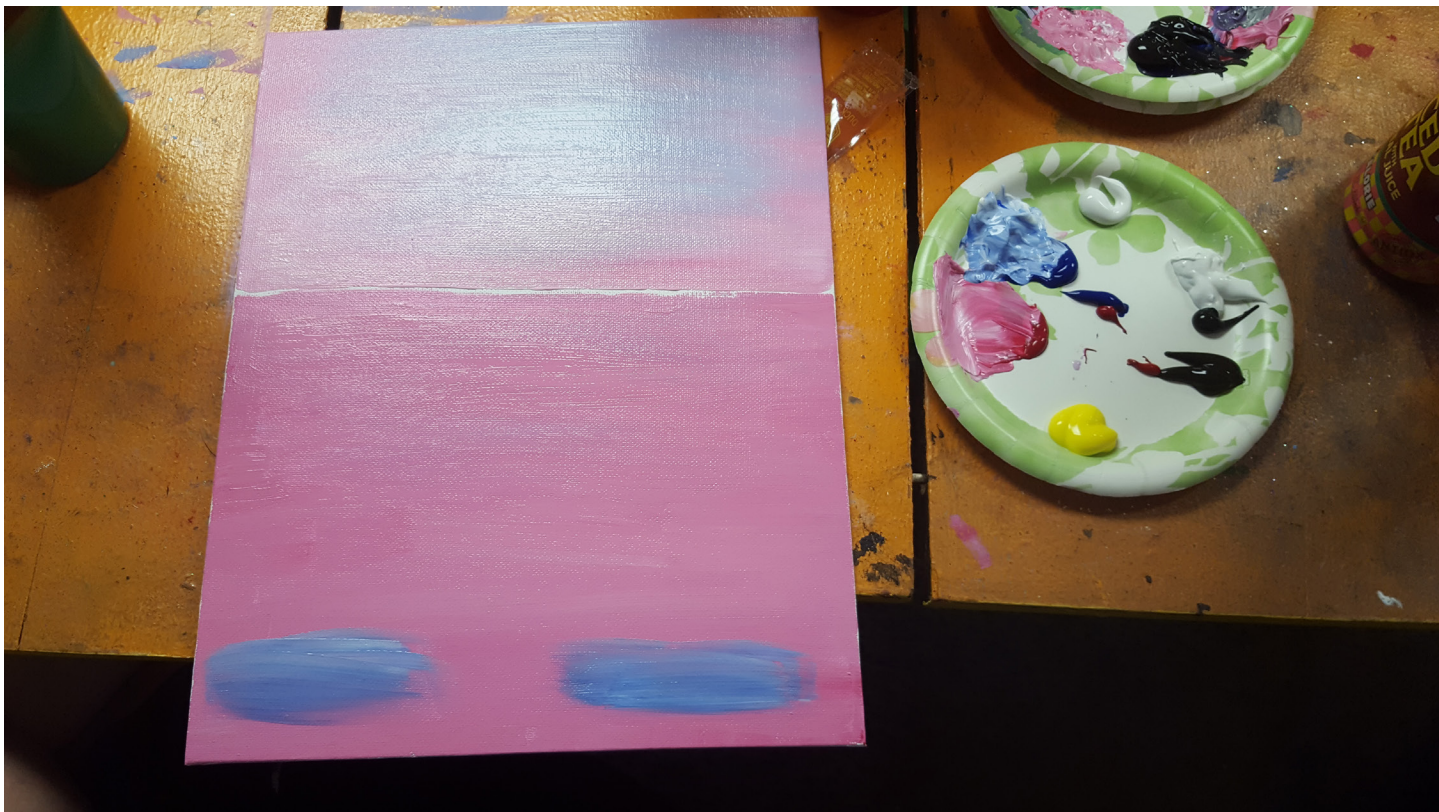
- 1" flat
- 1/2" flat
- round



Mix 50% of the red in with the white and paint it over the top 1/3 (see palette in this photo)
 Show students how to use the fat side of the brush (make sure they're not painting with the thin edge)



Mix 50% of the remaining red in and paint the rest of the bottom (see palette in this photo)
 **make sure there is NO room between these two planes or the students will be so annoyed later



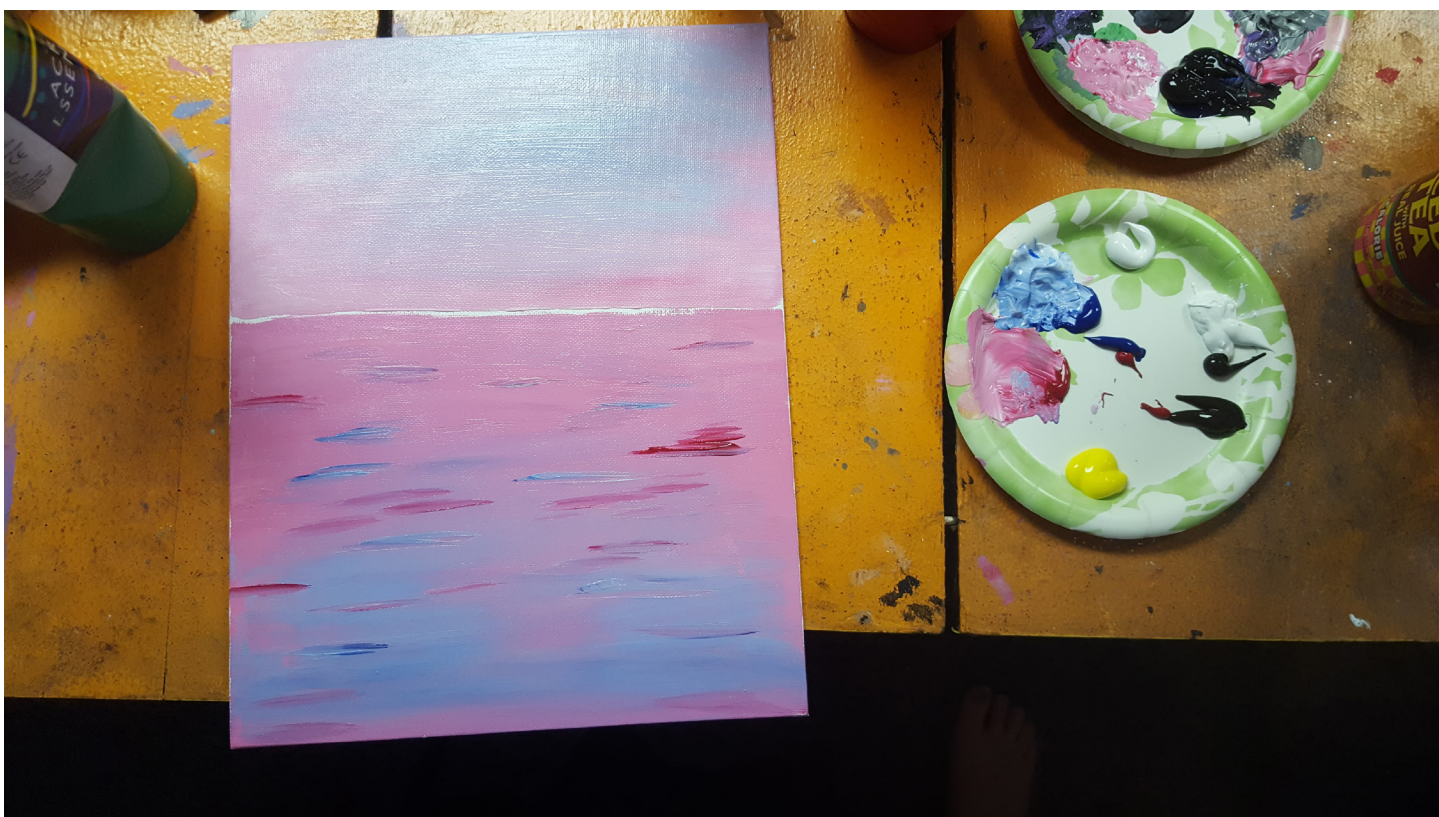
Mix 50% of blue into the white (again: see palette) and add some light ness into the sky going left-to-right (see sky in this photo then skip to next step I missed this one up)



Use the same sky photo and make these two blue areas underneath
Then, mix 50% of remaining blue into the light-blue you've already mixed and add darker bottoms to the areas



Clean the brush and then blend the areas a bit with the dry brush into each other
(No paint at this step)



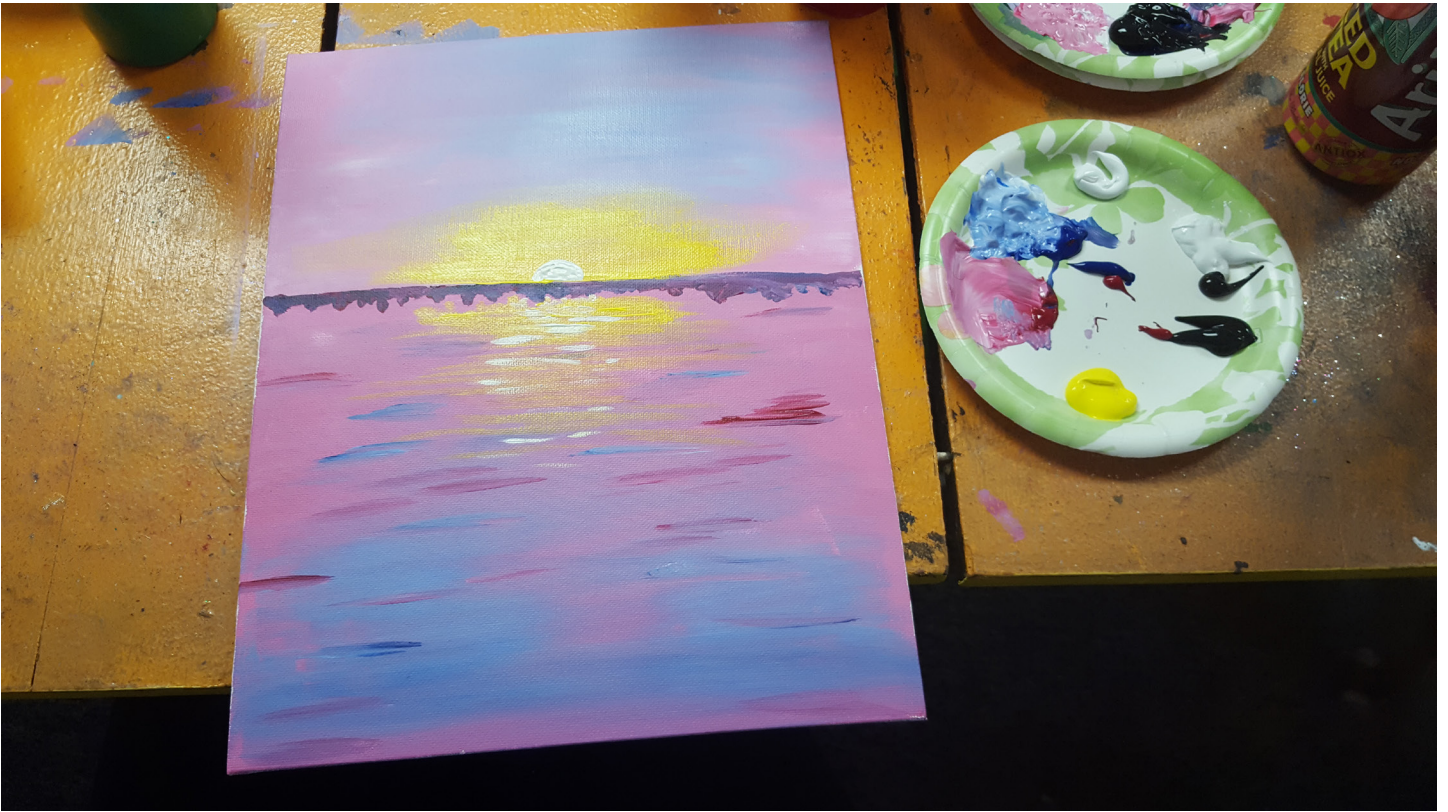
Using your flats, demonstrate how they used their fat ends to make the big color fields and now USING THE SKINNY SIDES, add some red and blue streets by making quick, light lines into the still-wet areas of your water



Hopefully the paint is all still wet. Using the little red-blue in the center of your palette, paint some upside-down pyramids that point down into the water.



Again, hopefully the paint is all still wet. Have them clean off their flats very well. Remind them about the skinny wave areas they painted. Using that skinny side, add yellow to the center then lightly blend out.



Wait for all of the underneath paint to dry. Like 10-15 min.

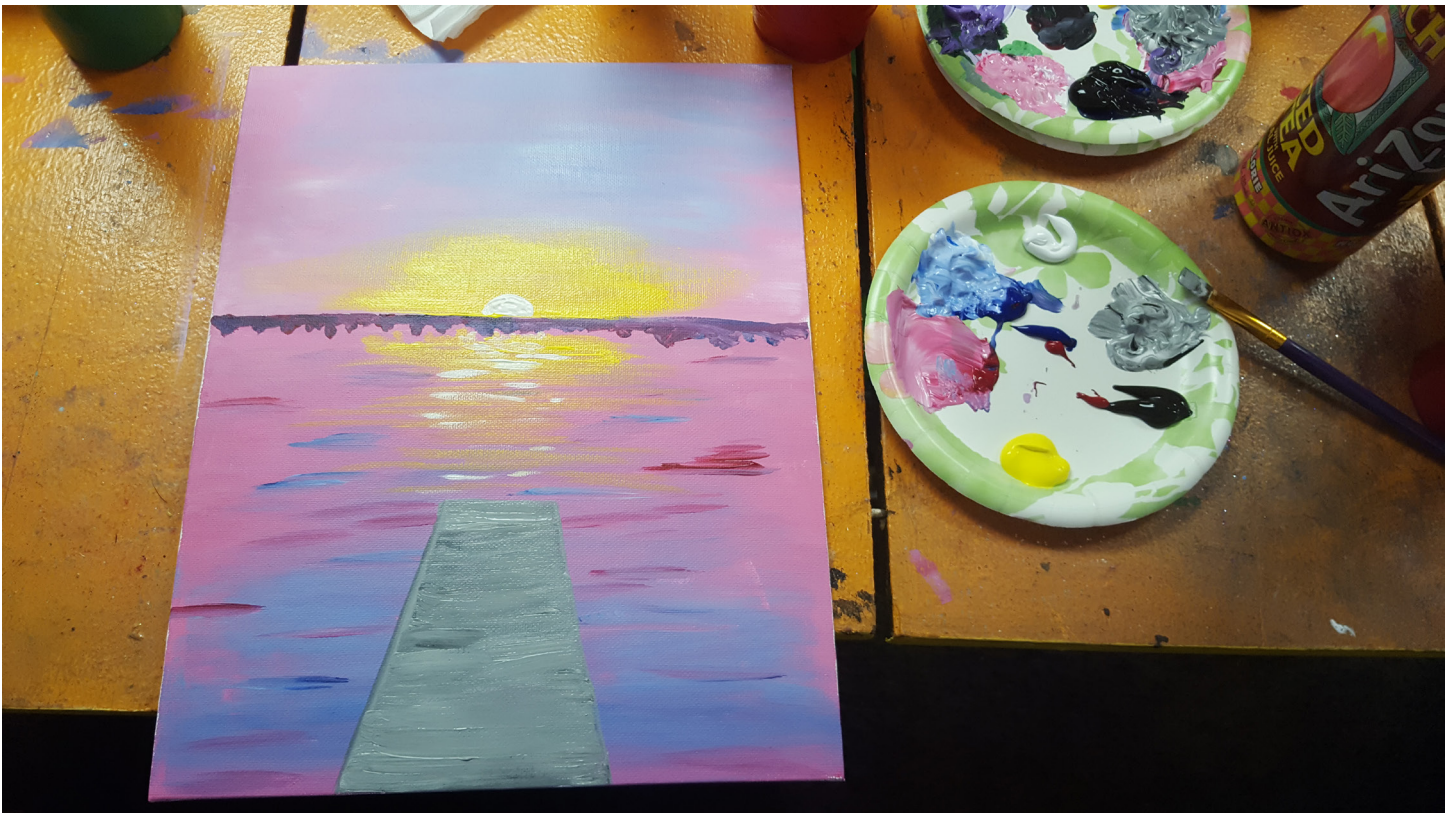
Using a clean round brush and white, add the sun (semi-circle) and a few little sun highlights under it (lightly)



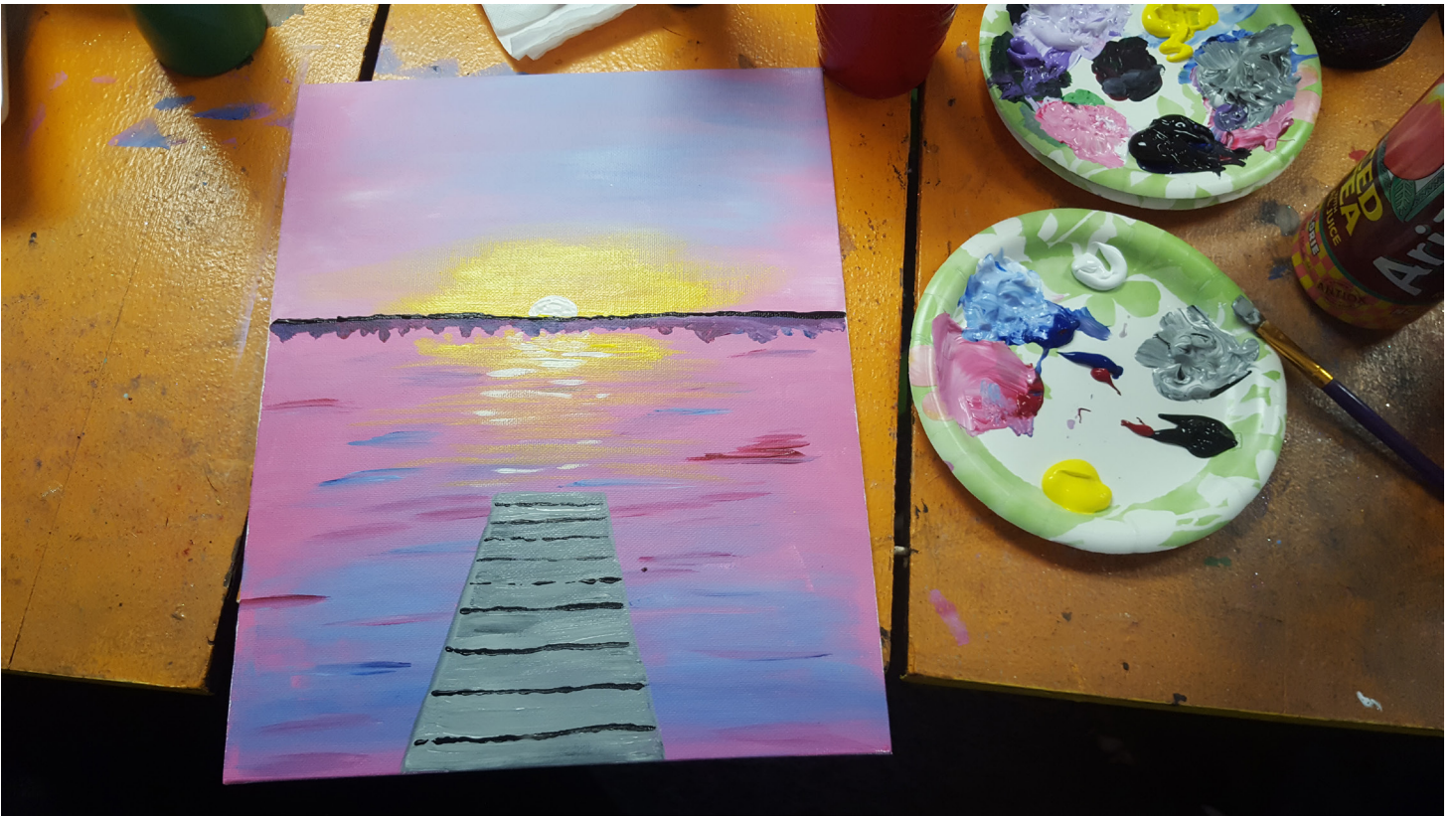
Mixing your white/black blob, use the fat end of the 1/2" flat to draw a big grey area that takes up the center 1/3 of your canvas bottom and draw a parallel line that it roughly 1/3 of the center of that bottom grey.



Using the skinny end of the 1/2" flat, connect them with straight lines.



Fill in the whole thing with paralel lines (streakiness is also v cool if the grey they mixed is marbalized)



Using the round, add tiny dock board lines in black that get closer together the farther they get away from the viewer

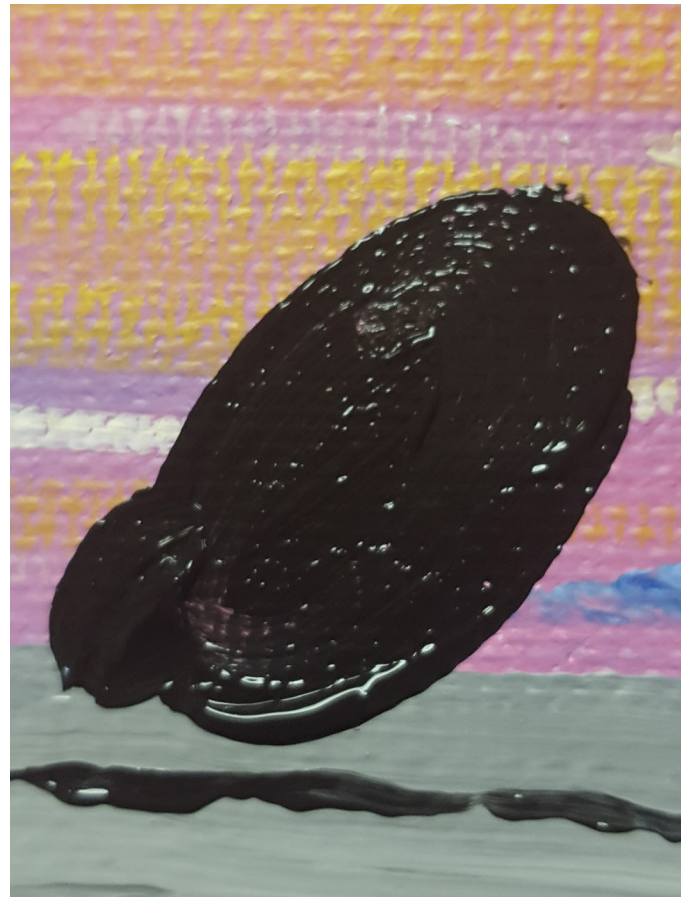


Add a pure-black mirror of the purple pyramids. Explain the purple lil guys were the trees' reflections, and now we're painting the trees.



Bunch of swish-and-flick grass bois in the foreground

The next bunch of pages are step-by-step dog. Demonstrate each shape on it's own canvas so everyone can paint along with you. "Now we draw an oval that's tilted to the right"; "now we add a little oval in the bottom right corner" etc so you break down the shape for them.







The last dog shape is a tiny tear drop ear



In contrast with the dogs' clear shapes, add a sloppy lil triangle of a shadow



Look at you, you're done.

Why was that painting so hard when it look so simple yikes

