



“Splashes of Fall” step by step by Christine



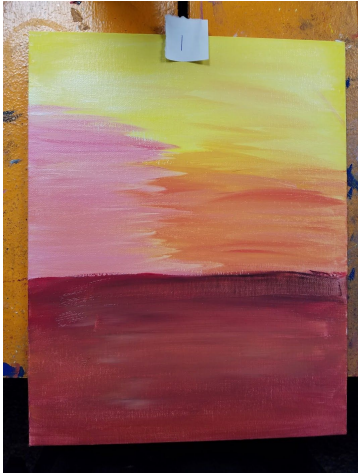
Basic palette:

- little black
- little blue
- More red (than what is shown)
- More yellow (than what is shown)
- More white (than what is shown)

You'll need:

- 1 ¼ inch square brush
- 1 small round brush

(I apologize that the first 4 steps are all pictured at once. I painted them in a different order than I suggest. Live and learn. The order I suggest below (yellow, orange, pink, red/brown) will likely work better and allow for less cleaning of brushes.



Step 1: Yellow Background

Using the ¼ inch square brush

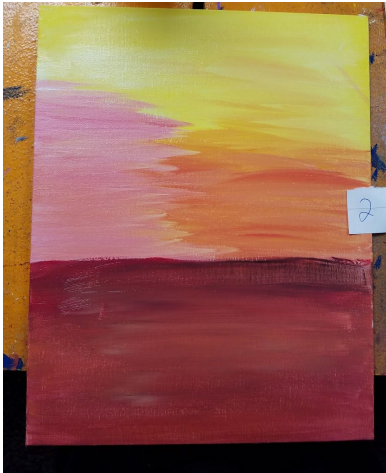
Take one dab of yellow and one dab of white

Streak yellow/white across the top ⅓ of canvas

No need to blend a lot

Note: Feel free to paint further down on the canvas than you may initially want to go. You can always cover with orange or pink.

No need to clean the brush, the colors will blend together.



Step 2: Orange Background

Using the ¼ inch square brush

Take one dab of yellow and a small dot of red to create orange

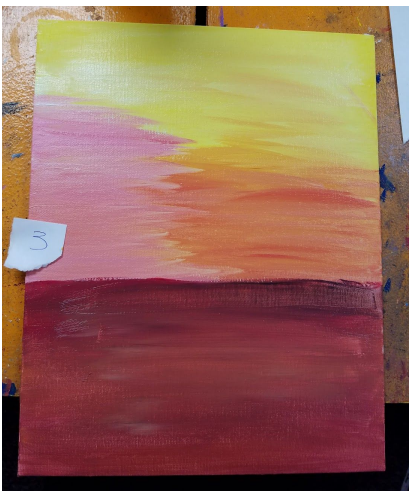
Streak yellow/pink across the right middle ⅓ of canvas

No need to blend a lot

Note: the more red used the darker the orange will be. Start with yellow and a little dab of red.

Note: To get layered effect hold brush with the bristles horizontal to the canvas (like a minus-) (not like an I)

Note: Feel free to paint further down on the canvas than you may initially want to go. You can always cover with red or brown.



Step 3: Pink Background

Using the ¼ inch square brush

Take one dab of white and a small dot of red to create light pink

Streak red/white across the left middle ⅓ of canvas

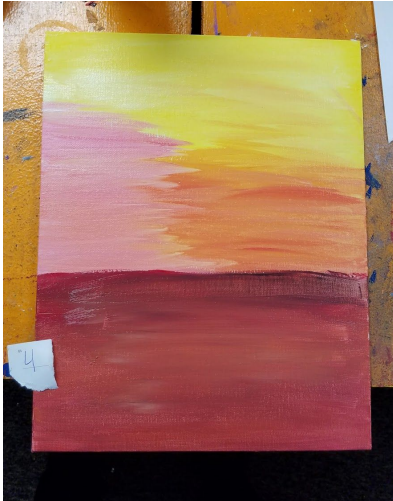
No need to blend a lot

Note: the more red used the darker the pink will be. Start with white and a little dab of red.

Note: To get layered effect hold brush with the bristles horizontal to the canvas (like an minus-) (not like an I)

Note: Feel free to paint further down on the canvas than you may initially want to go. You can always cover with red or brown.

Note: Feel free to encourage guests to streak pink in the orange or yellow to give the sky more definition.



Step 4: Red /Brown Background

Using the ¼ inch square brush

Take one dab of red, a dab of yellow, and a small dot of blue to create brown

Streak brown across the bottom ⅓ of canvas

No need to blend a lot

Note: the more blue used the darker the brown will be. Start with red and yellow, then add small dots of blue.

Note: To get layered effect hold brush with the bristles horizontal to the canvas (like a minus-) (not like an I)

Clean brush

Pro tip: Making the ground green is a lovely option for guests

Let dry/ help people with first few steps



Step 5: Trees!

Using the round brush

create trees in the foreground and background of painting. Branches can be coming out from the side.

Note: Don't worry too much about how these look right now. We will add highlights, a shadow and leaves eventually.

Note: Branches/ trees look more realistic if they are thicker at the base

Clean brush



Step 6: River/ Walkway

While trees are drying

Using the flat square brush and white paint create a stream from the lower left side to the bundle of trees in the mid right side.

Note: don't forget, (like i did), to continue stream past trees, if your stream goes that far.

Clean brush

Pro tip: making the river blue is a lovely option



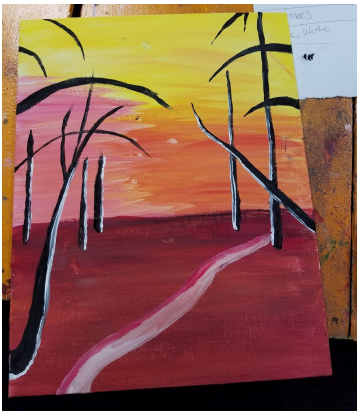
Step 7: Highlight the Trees

After trees have dried, add highlight.

Using small round brush take small dab of white

Highlight inside edge of trees, you'll notice I didn't highlight entire tree, I left the tops bare as they will likely get covered by leaves

Clean brush



Step 8: Highlight the Stream

After stream has dried, add highlight.

Using small round brush take small dab of white and a dab of red highlight top edge of stream

Clean brush



Step 9: More leaves, pink ones

While stream is drying, add pink/red leaves to some trees, some to ground, and horizon line.

Using ¼ inch flat brush take a dab of red and a dab of white. Dab brush on branches to get leafy effect

Clean brush

Step 10: Tall black grass

While leaves are drying, add tall grass in front right and left corners

Using small round take a dab of black

Step 11: Bridge

While grass is drying, add bridge

Using ¼ inch flat brush take a little white and little brown or gray.

Step 12: Yellow Grass

While bridge is drying, add tall grass in front right and left corners

Using small round take a dab of yellow and a dab of white, and a small for of blue, if desired

From the bottom of the canvas, pull the brush upward with a slight arch to the left or right



Step 13: Leaves. Everywhere.

Add leaves to tree, some on ground, and horizon line

Using ¼ inch flat brush take a dab of pink and yellow, to create orange Dab brush on branches to get leafy effect

Note: Over blending is bad for this leafy effect, the key is contrast

Step 14: Tree shadows

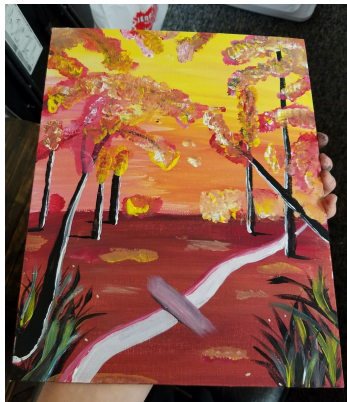
While leaves dry

Add a small shadow to trees.

Note: Brightness comes from center of painting. Keep that in mind when creating shadows

Step 15: Sooooo many leaves

Repeat leaf technique with yellow and white mix (white helps to brighten the yellow).



Last step: (not shown here) Sign Painting and Relax!

Don't forget to have them sign or initial their painting! (I always date mine too)

Finished product (after some last minute touch ups, fixing the river, and the bridge)

