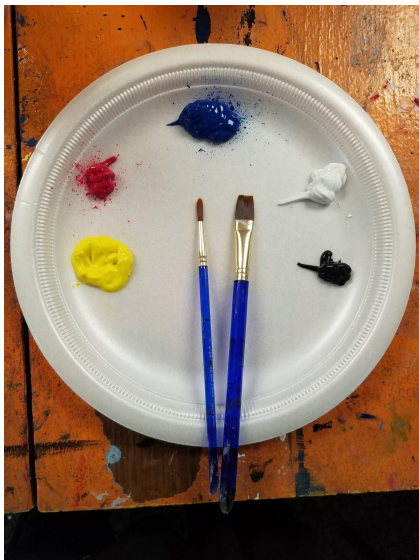




“Ocean Breeze” step by step by Christine

Basic palette:



Dime Size black  
Dime Size green  
Dime Size yellow  
Quarter Size white  
Quarter Size red  
Quarter Size blue

You'll need:

1 1 inch square brush  
1 1/4 inch square brush  
1 small round brush

For Easy Cleanup: Painting can be done with:

1 1/4 inch square brush  
1 small round brush



### Step 1: Blue Water

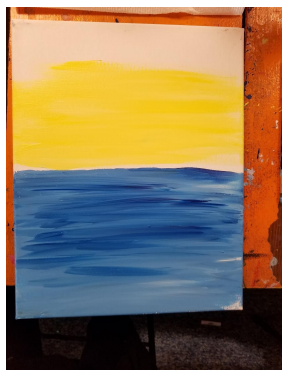
Using the 1 inch square brush

Take one dab of blue and one dab of white

Streak blue/white the bottom ½ of canvas

Note: Streaks are good, no need to blend a lot

Note: To get layered effect hold brush with the bristles horizontal to the canvas (like a minus -) (not like an I)



Clean Brush

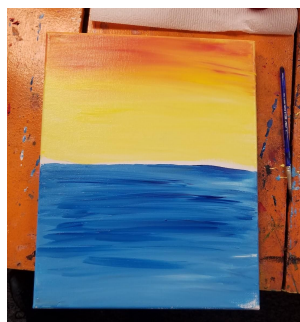
### Step 2: Yellow Sky

Using the 1 inch square brush

Take one dab of white and a dab of yellow

Streak yellow/white across the top 1/3 of canvas, leaving about an inch or two of space for our next step, orange.

Note: Guests might want to leave space between the blue and yellow, so the blue can dry. If colors blend, it may start to look green



### Step 3: Orange Sky

Using the ¼ inch square brush

Take one dab of yellow and a small pin size dot of red

Streak yellow/red across the top 1/3 of canvas

Clean Brush



### Step 4: Crisp horizon line

Using the ¼ inch square brush

Take one dab of blue OR one dab of yellow

Create clean horizon line



### Step 5: Shoreline- after water is dry

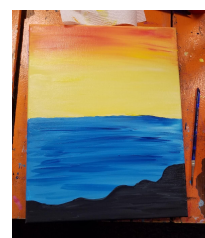
Using the ¼ inch square brush

Take one dab of black

Create shoreline from 1 inch from bottom left side of canvas to 3 inches above the bottom right corner

Fill in

Clean brush



### Step 6: Create Clouds

Using the ¼ inch square brush

Take one dab of white

Dab white on top ½ canvas in cloud like clumps

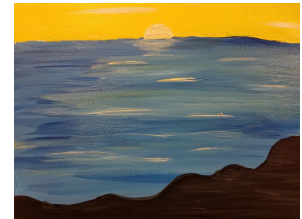


### Step 7: Create sun and shimmer in water

Using small round brush take a dot of white

Create sun on horizon line (painting has it in center, but guests can place it wherever)

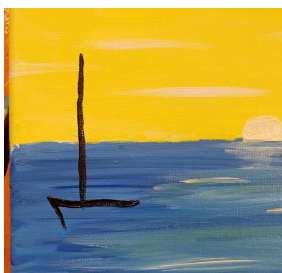
Create sun's reflection and shimmer in the water



### Step 8: Make your Sailboat

Using small round brush take a dot of black

Create upside down check mark, or sideways seven. A diagonal line down and then a straight line horizontally

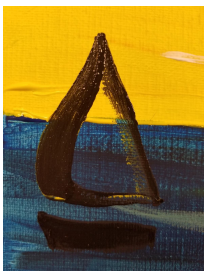
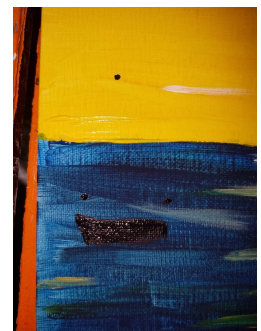


### Step 9: Sailboat Continued

Using small round brush take a dot black

Create vertical line upward to create mast  
OR

Create 3 dots of a triangle to create Sails

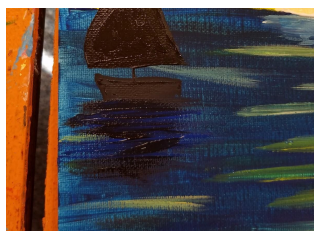


### Step 10: Sails

Using small round brush take a dot black

Connect 3 dots of triangle. Leave front sail a little rounded if you like. It'll appear as if it's actually sailing

Connect sail to boat with a vertical line, if you haven't already



### Step 11: Reflection of Boat



Using the ¼ inch square brush

Take dot of black

Create reflection of the sailboat in the water



Step 12: Create the shadow in the clouds

Using the ¼ inch square brush

Take dot of white and a tiny dot of black

Dab shadow to undersides of clouds



Step 13:

Using the small round brush and a dot of white

create a highlight on the shoreline

Last step: (not shown here) Sign Painting and Relax

Don't forget to have them sign or initial their painting! (I always date mine too)

