

GRAFFITI BODY PAINTING

Training Packet

STYLE 1 - MARKER TAGS





WISER
body graffiti



STEP 1 - Paint Base Colors

Goal is to go be as colorful as possible



"Camo" effect with 3 colors and the corner of the sponge



Using a sponge to apply very loose one-stroke case (more for texture than for precision)



2 blended colors (still keeping them more textured than a smooth blend)

1 color, again not very smooth (applied with the corner of the sponge for texture)



STEP 2 - Brush Letters

Flat 1/2" Brush Letters



A B C D
E F G H I
J K L M
N O P Q R S
T U V W X
Y Z

A B C D
E F G H I
J K L M
N O P Q R S
T U V W X

A B C D E F G H I
J K L M N O P Q
R S T U V W X
Y Z

A B C D E F

" ' & % ^ _ ` ~ { | } ~ { | } ~ { | } ~ { | } ~ { | } ~ { | }
~ { | } ~ { | } ~ { | } ~ { | } ~ { | } ~ { | } ~ { | } ~ { | } ~ { | } ~ { | }
~ { | } ~ { | } ~ { | } ~ { | } ~ { | } ~ { | } ~ { | } ~ { | } ~ { | } ~ { | }
~ { | } ~ { | } ~ { | } ~ { | } ~ { | } ~ { | } ~ { | } ~ { | } ~ { | } ~ { | }
~ { | } ~ { | } ~ { | } ~ { | } ~ { | } ~ { | } ~ { | } ~ { | } ~ { | } ~ { | }
1 2 3 4 5 6 7 8 9 0 " ' & % ^ _ ` ~ { | } ~ { | } ~ { | } ~ { | } ~ { | } ~ { | }

Round Brush Letters

A B C D E F G H I J K L M
N O P Q R S T U V W X Y Z

Az Bb Cc Dd Ee
Ff Gg Hh Ii Jj
Kk Ll Mm Nn Ññ
Oo Pp Qq Rr Ss
Tt Uu Vv Ww Xx
Yy Zz

A B C D
E F G H I
J K L M
N O P Q R S
T U V W X
Y Z

STEP 3 - Filler Symbols

(Using same brush as letters)

Arrows off letters



Lines in gaps



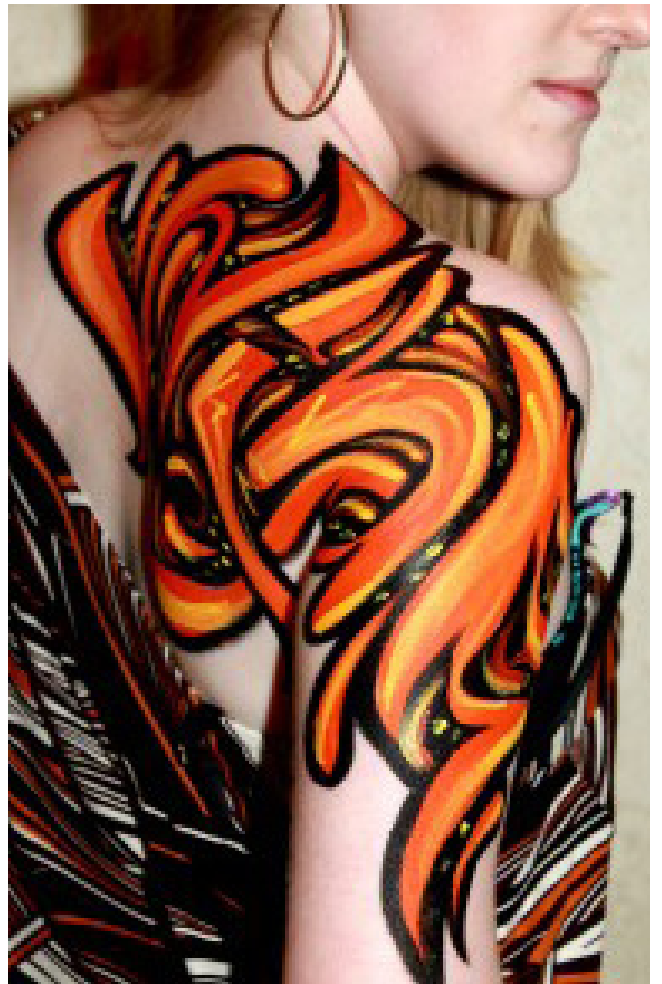
Quote marks



Misc gap fillers



STYLE 2 - SPRAY TAGS



STEP 1 - FLAT LETTERS



A B C D E F G H I J K L M

N O P Q R S T U V W X Y Z

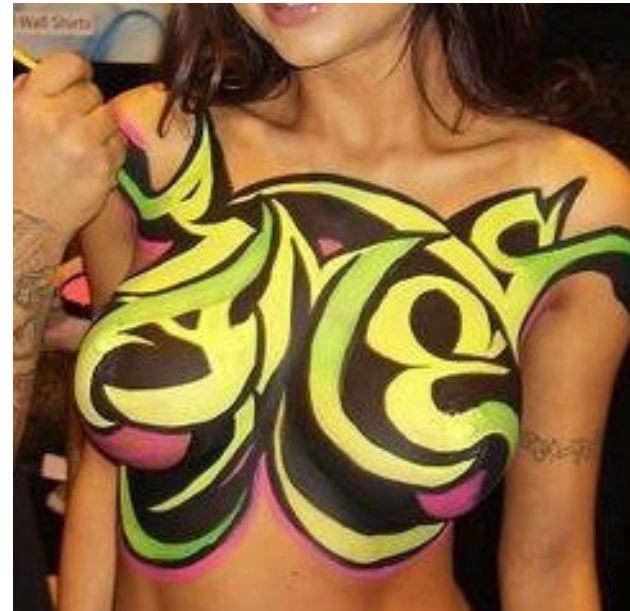
A B C D E F G H I J K L M

N O P Q R S T U V W X Y Z





SKINCOGNITO HOWELL, MI







1. Lay down a colorful background wherever they want to be painted.

TIPS

Put it on thin and dry so it's not too wet when you start to work on it.

Try to pick two similar colors on the color wheel



2. Using the 1" brush, paint in the 4-7 characters

TIPS

Keep it super abstract and use a reference for shapes

Keep it real thin to thick

Keep the shapes close together: not much negative space

Add some random "quote makes" or misc shapes to help make it more abstract but also fill up the space



3. Add one light color to the top and left sides only to create a “light source”

TIPS

Use a similar color but avoid white if possible. If you need white, mix it a bit with the color under it so it's not real white



4. Add one dark color to the bottom and right sides to create a “shadow”

TIPS

Use a darker color but NOT black (trust me)



5. Thin-to-thick black outlines

TIPS

Make them as dramatic thin-to-thick as you can



6. Make the thicker parts even thicker

TIPS

Compare to the top image to see what I'm talking about



7. Put a thin white line over the entire outside

TIPS

If you want to fill in a sliver with more white (such as between the two horizontal pieces in the E) do so

Don't outline any "closed off" areas (see between the two s's here)



8 Fill in any inside gaps with the highlight color nice and thick so you can't see the background color



9. Add some of the original letter color to the inside to continue to make the letters more and more abstract



10. Add some white bubbles where ever you have negative space and BOOM you done